

52 Tulip Way Woonona, NSW



Elegant family living within strolling distance of the village!

Ideally situated on a quiet corner allotment a short stroll from Woonona's vibrant village, this welcoming three-bedroom home is sure to delight families seeking a peaceful coastal lifestyle with every convenience close by.

Price: Contact Agent
Council Rates: \$508.24 p/q
Water Rates: \$248.45 p/q

LOCATION

The stunning beaches of Bulli, Woonona, and Sandon Point all await within five minutes of home (approx.) promising an easy coastal lifestyle, with the Bulli Beach Caf? inviting you for a seaside lunch just five minutes from home (approx.).

...

Drive to Sydney in 77 minutes (approx.) or walk to Bulli Station for easy rail links to Wollongong and Sydney....

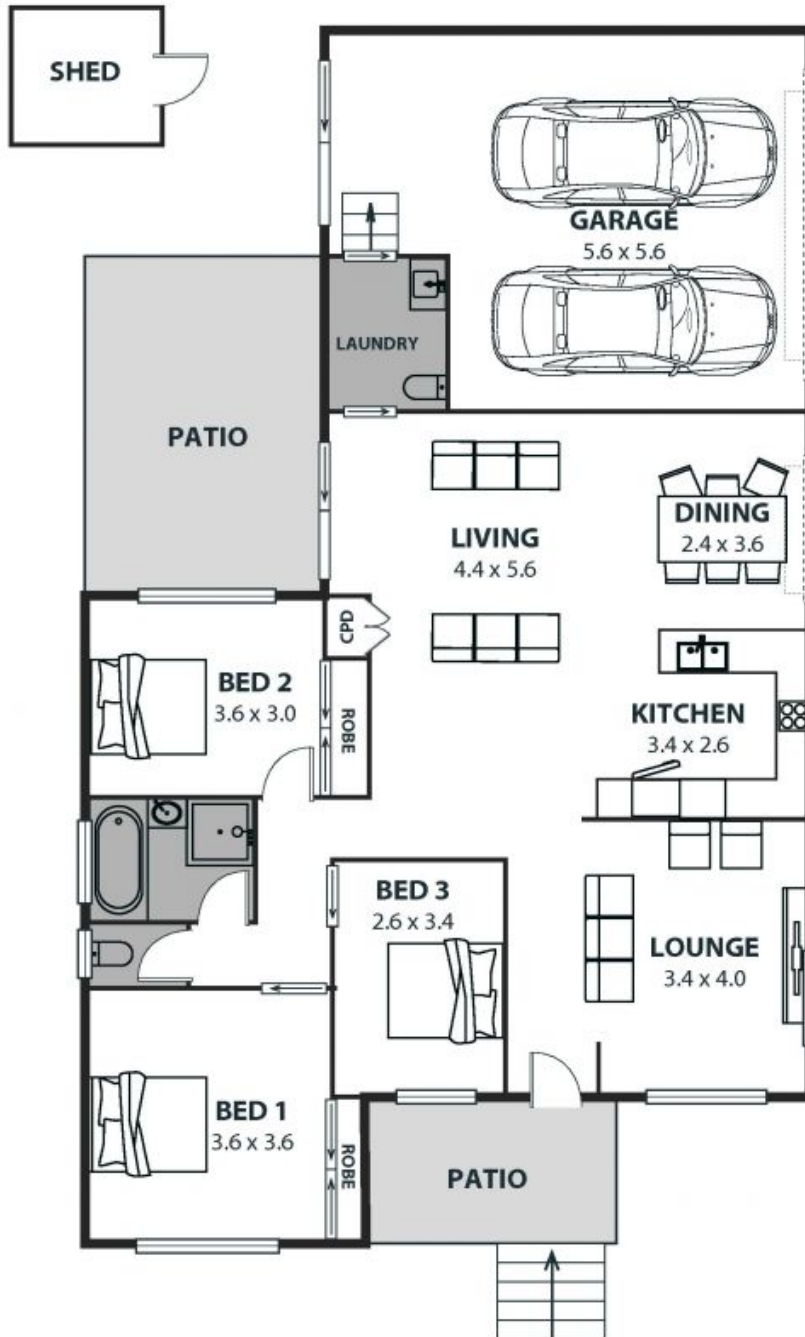
...

...

Ethan Hennessy

Isabelle Lace

02 4267 5377



52 Tulip Way, Woonona

Internal Space 158m²



Plans shown are for presentation purposes and are not part of any legal document or title and are subject to errors, omissions, inaccuracies and should not be used as sole and accurate reference. Particulars given are for general information only and do not constitute any representation on the part of the vendor or agent. No liability will be accepted.