



3/25 Popes Road Woonona, NSW

 2
  1
  2

Easy villa living and a fabulous walk-to-the-village location!

First-home buyers will be delighted by this ideally positioned entry into the coveted Woonona property market. Two bedrooms and open-plan living are complemented by a spacious entertaining courtyard, offering comfortable living on the fringe of Woonona Village. Move straight in and enjoy, or plan cosmetic updates to transform it into your dream coastal home.

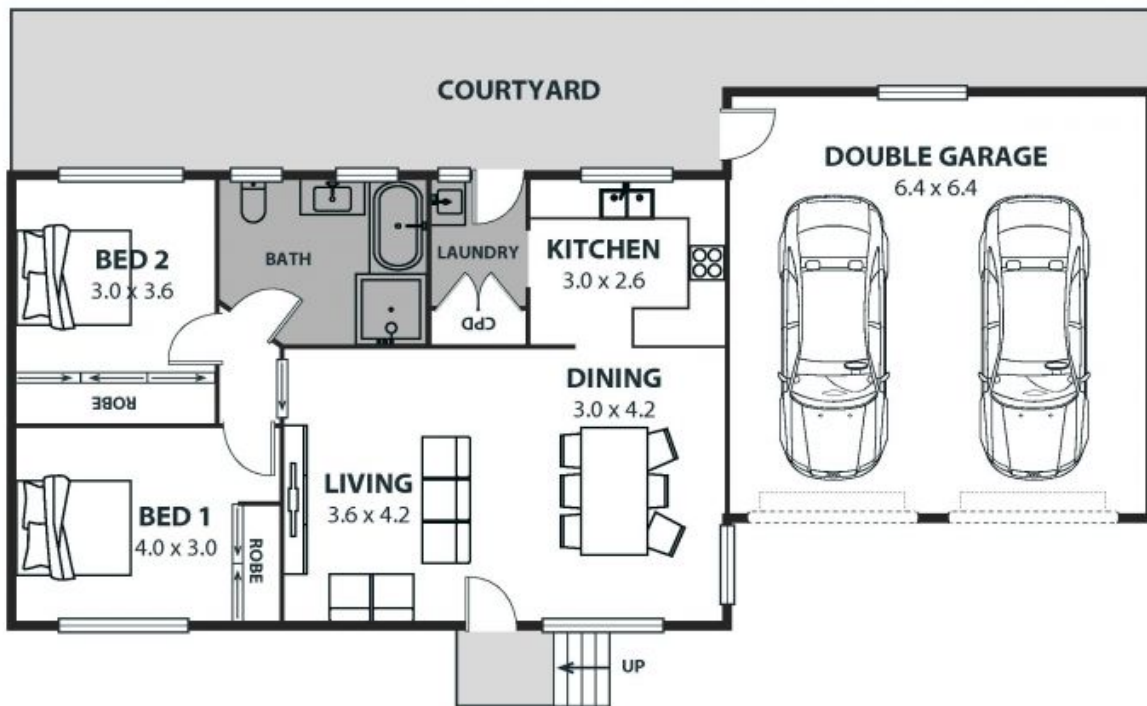
Price: \$730,000
Strata Rates: \$739.00 p/q

Location

...

Drive to Wollongong in 14 minutes (approx.) for big-city conveniences, or take a day trip to Sydney, a 72-minute drive from home (approx.). Alternatively, Bulli Station and Woonona Station are both only four minutes away (approx.), offering easy rail transfers for a str

Adam McMahon



3/25 Popes Road, Woonona

Internal Space 117m²



Plans shown are for presentation purposes and are not part of any legal document or title and are subject to errors, omissions, inaccuracies and should not be used as sole and accurate reference. Particulars given are for general information only and do not constitute any representation on the part of the vendor or agent. No liability will be accepted.