



9/40 Cherry Street Woonona, NSW



2



1



2

## The perfect first home or investment in a superb coastal lifestyle location!

Offering a contemporary haven just a short stroll from Woonona Village, this two-bedroom townhouse will delight those on the hunt for their first home and investors seeking a clever addition to their portfolio. Sun-drenched open-plan living is perfectly complemented by a generous north-facing patio for easy entertaining, while a private garage and excellent storage ensure enviable convenience.

**Price:** \$707,500

**Council Rates:** \$386.00 p/q

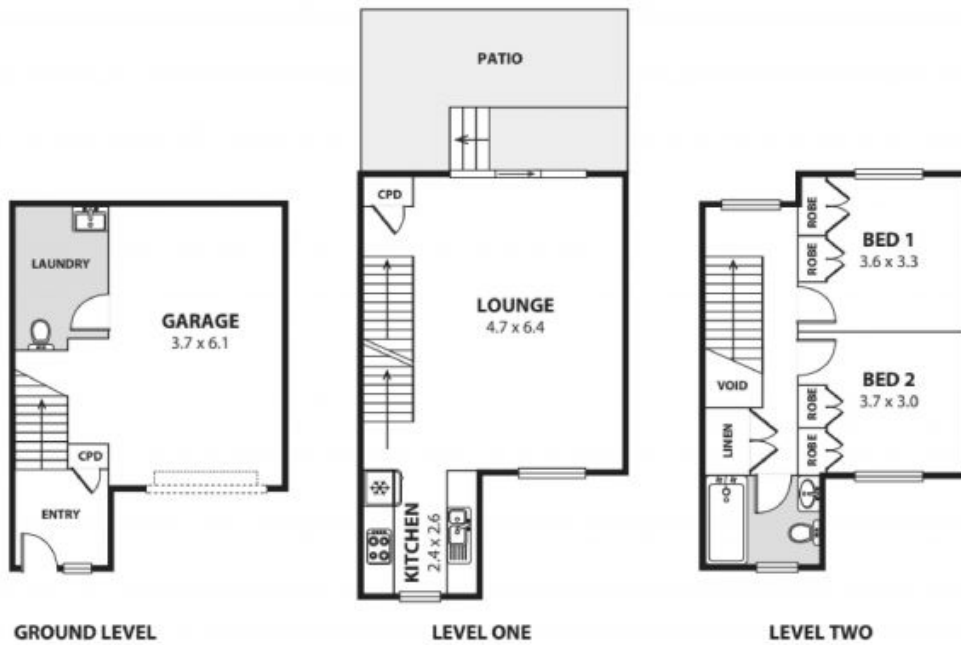
**Strata Rates:** \$930.28 p/q

### Location

Positioned within the sought-after Edgewood Estate, this inviting townhouse offers a fantastic coastal lifestyle in one of Woonona's most convenient locations.

Walk to Woonona Village in just 13 minutes (approx.) for a coffee at your favourite caf? or to hit the shops, and enjoy the convenience of Corrimal's vibrant shopping centres and choice of supermarkets only seven minutes from home (approx.). Also within walking distance are the magnificent Russell Vale Golf Club and Hollymount Park, while the renowned beaches

**Adam McMahon**



*Plans shown are for presentation purposes and are not part of any legal document or title and are subject to errors, omissions, inaccuracies and should not be used as sole and accurate references. Particulars given are for general information only and do not constitute any representation on the part of the vendor or agent. No liability will be accepted.*