



21/11 Atchison Street Wollongong, NSW



## Inner-city apartment living at its best!

Offering spacious, light-filled living in the heart of Wollongong's vibrant CBD, this two-bedroom apartment presents an exciting opportunity for home buyers and investors alike. With modern interiors, secure parking, and a huge wraparound balcony with mountain views, this is a must for the inspection list!

### Location

Perfectly positioned right in the heart of Wollongong's city centre, this inviting apartment offers a superb inner-city lifestyle and easy access to the city's stunning parks and beaches.

Boston Espresso is ideally located on the ground floor of the complex for a great coffee to start the day, while the CBD awaits just a five-minute stroll from home (approx.) offering a huge selection of cafes, restaurants, bars, entertainment and shopping centres.

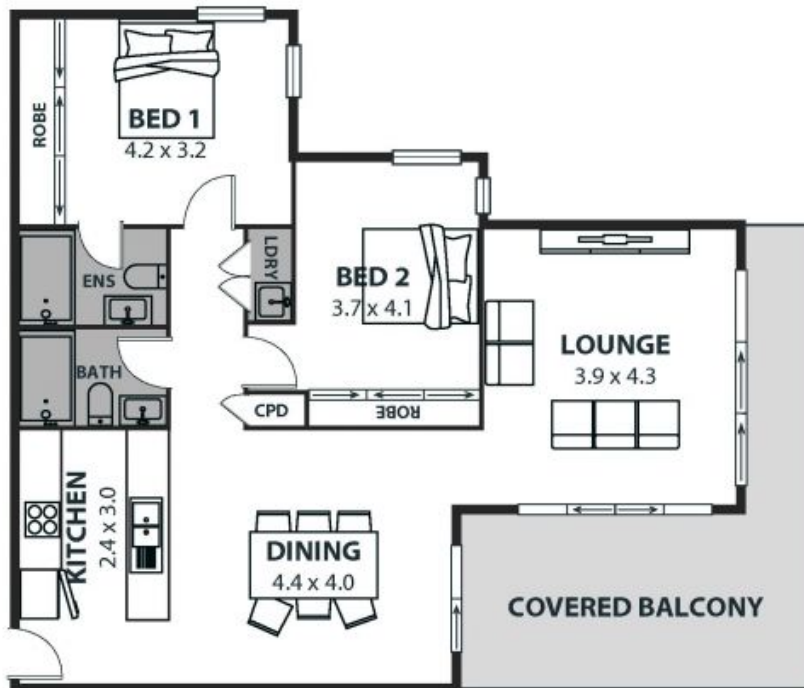
Stroll to McCabe Park and cycle to Wollongong Beach in just six minutes (approx.) to enjoy sunny days on the sand. Walk to Wollongong Golf Club to meet friends for a few rounds on the waterfront, or stro

**Price:** \$640,000  
**Council Rates:** \$356.00 p/q  
**Water Rates:** \$173.00 p/q  
**Strata Rates:** \$1,317.00 p/q

**Ethan Hennessy**

**Isabelle Lace**

02 4267 5377



**21/11 Atchison Street, Wollongong**

Internal Space 80m<sup>2</sup>



Plans shown are for presentation purposes and are not part of any legal document or offer and are subject to errors, omissions, inaccuracies and should not be used as sole and accurate reference. Particulars given are for general information only and do not constitute any representation on the part of the vendor or agent. No liability will be accepted.