



3 Semaphore Road Berkeley, NSW



4



2



2

Easy family living in a superb walk-to-everything location!

With schools, shops, and Lake Illawarra within easy strolling distance, stunning beaches close by, and Wollongong just 14 minutes away (approx.), this spacious four-bedroom home offers easy family living in a superb location. With exciting opportunities for cosmetic updates and a huge back garden offering room to extend (STCA), this inviting home will appeal to families, investors, and renovators alike.

LOCATION

Easy family living awaits in this ideal Berkely location, with every convenience within strolling distance.

Walk to Berkely's town centre for the convenience of Coles and a selection of retailers, or drive to nearby Warrawong Plaza in eight minutes for vibrant big-name shopping, a choice of supermarkets, and Hoyts Cinema.

Walk the kids to Berkeley Public School and Illawarra Sports High School, and enjoy a 16-minute walk (approx.) to the majestic Lake Illawarra where endless outdoor adventure awaits. Your choice of beaches beckons just ten minutes from home (approx.), while the big-city excitement, convenience

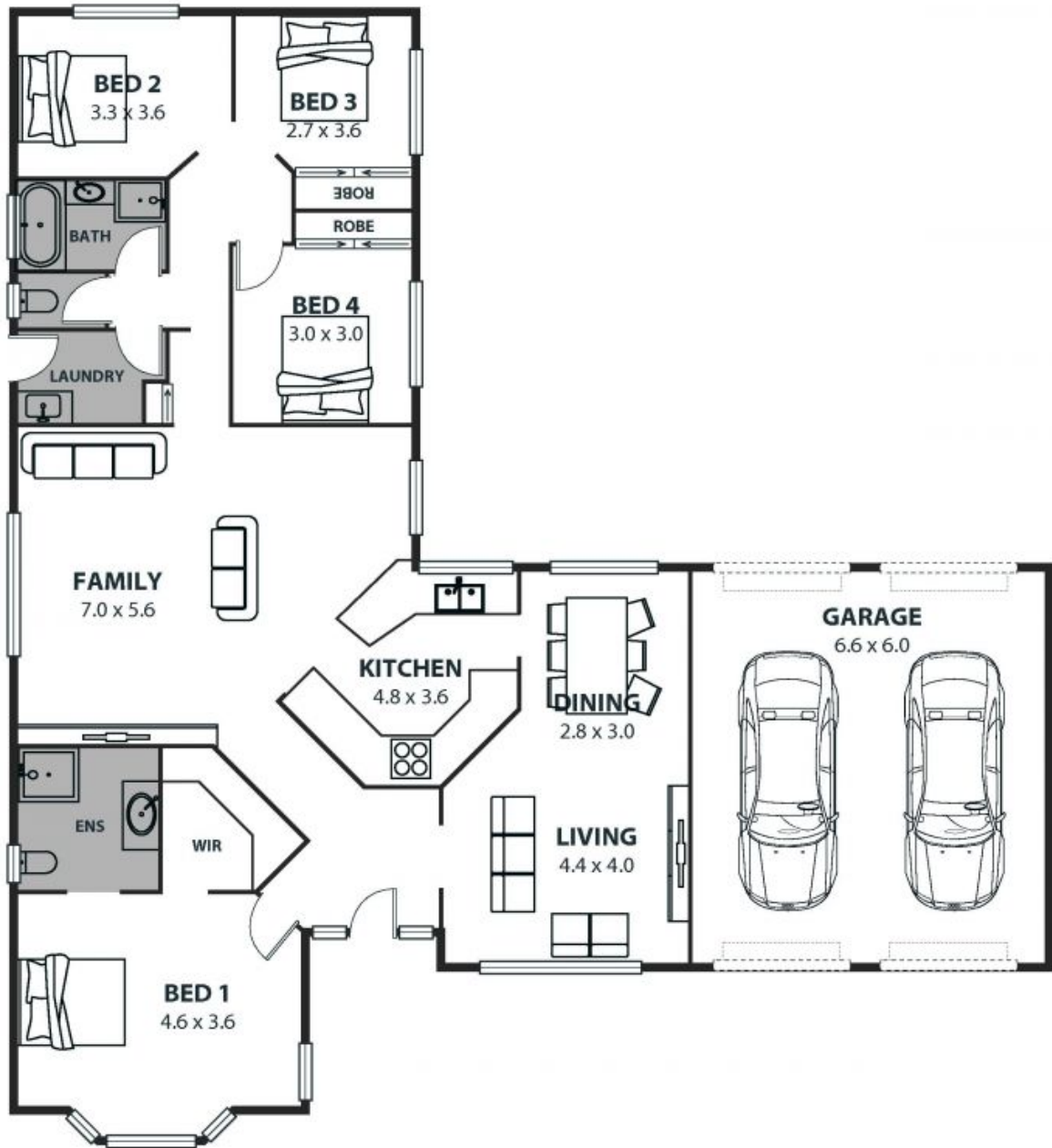
Price: \$912,000

Council Rates: \$495.50 p/q

Ethan Hennessy

Isabelle Lace

02 4267 5377



3 Semaphore Road, Berkeley

Internal Space 190m²



Plans shown are for presentation purposes and are not part of any legal document in title and are subject to errors, omissions, inaccuracies and should not be used as sole and accurate reference. Particulars given are for general information only and do not constitute any representation on the part of the vendor or agent. No liability will be accepted.