



15/6 Pitman Lane Woonona, NSW



3



1



1

## Easy modern living with incomparable mountain views!

Peacefully situated in a quiet cul de sac a short walk from the welcoming villages of Woonona and Bulli, this updated three-bedroom apartment offers a superb coastal lifestyle and stunning mountain views.

### Location

With cafes, restaurants, and shops within easy walking distance and beaches close by, this enviable location promises an easy coastal lifestyle sure to appeal to first-home buyers, investors, and downsizers.

A four-minute drive (approx.) is all that lies between you and the beautiful beaches of Bulli, Woonona, and Sandon Point, with the iconic rock pools of Woonona and Bulli inviting you for a scenic morning swim.

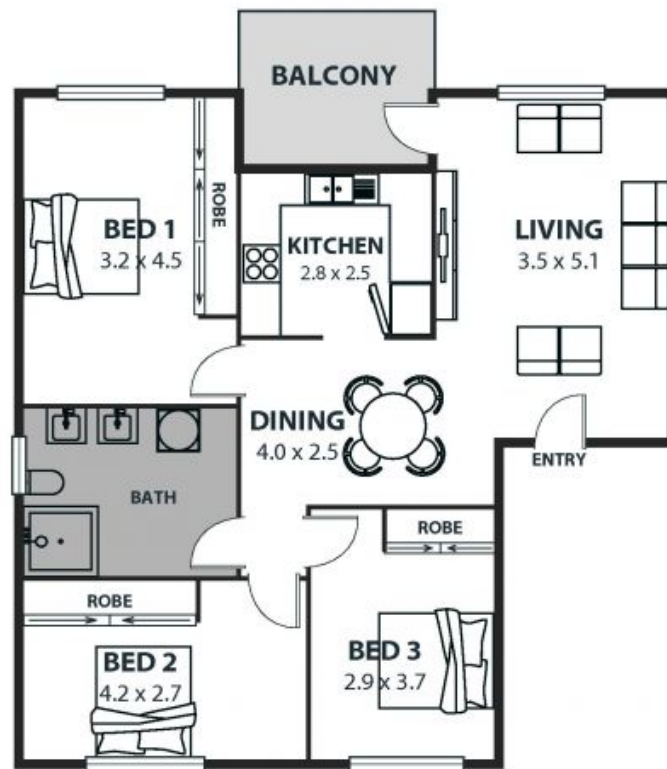
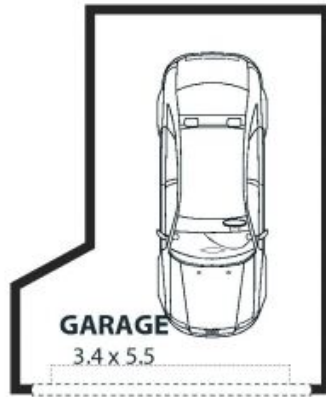
### Property

Situated within a beautifully maintained residential complex, this spacious home offers house-like proportions with all the benefits of low-maintenance apartment living. Engineered timber floorboards are the perfect complement for a calming neutral colour

scheme, with a stunning exposed brick wall adding character to the open-plan living area and the Illawarra Es

**Price:** \$650,000  
**Council Rates:** \$361.00 p/q  
**Water Rates:** \$180.00 p/q  
**Strata Rates:** \$785.00 p/q

**Adam McMahon**



**15/6 Pitman Lane, Woonona**

Internal Space 109m<sup>2</sup>



Plans shown are for presentation purposes and are not part of any legal document in title and are subject to errors, omissions, inaccuracies and should not be used as sole and accurate reference. Particulars given are for general information only and do not constitute any representation on the part of the vendor or agent. No liability will be accepted.