



20 Hillcrest Avenue Woonona, NSW



4



2



1

## Where mountain views set the scene for easy family living

Families seeking an instantly inviting home in a convenient lifestyle location are sure to be delighted by this four-bedroom, two-bathroom residence, ideally situated within walking distance of Woonona Village and Bulli Village. Open-plan living is complemented by a large entertaining balcony and a beautifully landscaped back garden with breathtaking mountain views, while proximity to some of the region's most stunning beaches promises a dream coastal lifestyle.

**Price:** \$1,450,000

### LOCATION

...

...

Drive to Sydney in a little over an hour (approx.) or walk to Bulli Station to sit back and enjoy the journey by rail. ...

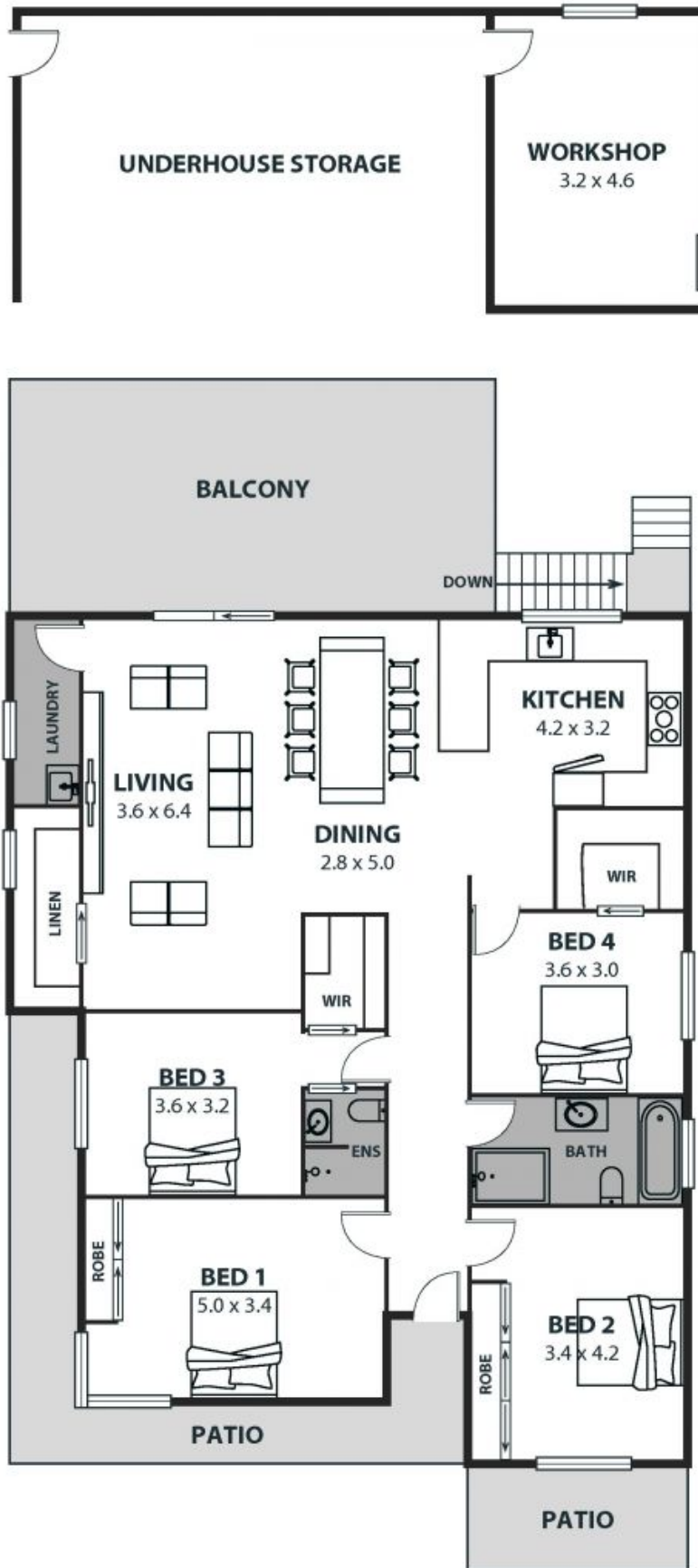
...

...

**Ethan Hennessy**

**Ethan Hennessy**

02 4267 5377



**20 Hillcrest Avenue, Woonona**

Internal Space 157m<sup>2</sup>



Plans shown are for presentation purposes and are not part of any legal document or title and are subject to errors, omissions, inaccuracies and should not be used as sole and accurate reference. Particulars given are for general information only and do not constitute any representation on the part of the vendor or agent. No liability will be accepted.