



10a Gifford Street Coledale, NSW



## Inviting coastal sanctuary with stunning ocean views!

Set back from the street for peaceful everyday living or a private coastal getaway, this instantly inviting home offers welcoming interiors, superb alfresco entertaining, and an enviable walk-to-the-beach lifestyle in one of Coledale's most sought-after pockets.

**Price:**

Contact Agent

### Location

Ideally located to enjoy the best of the Coledale lifestyle, this fabulous property offers ease and privacy in a stunning coastal setting.

...

...

...

Property...

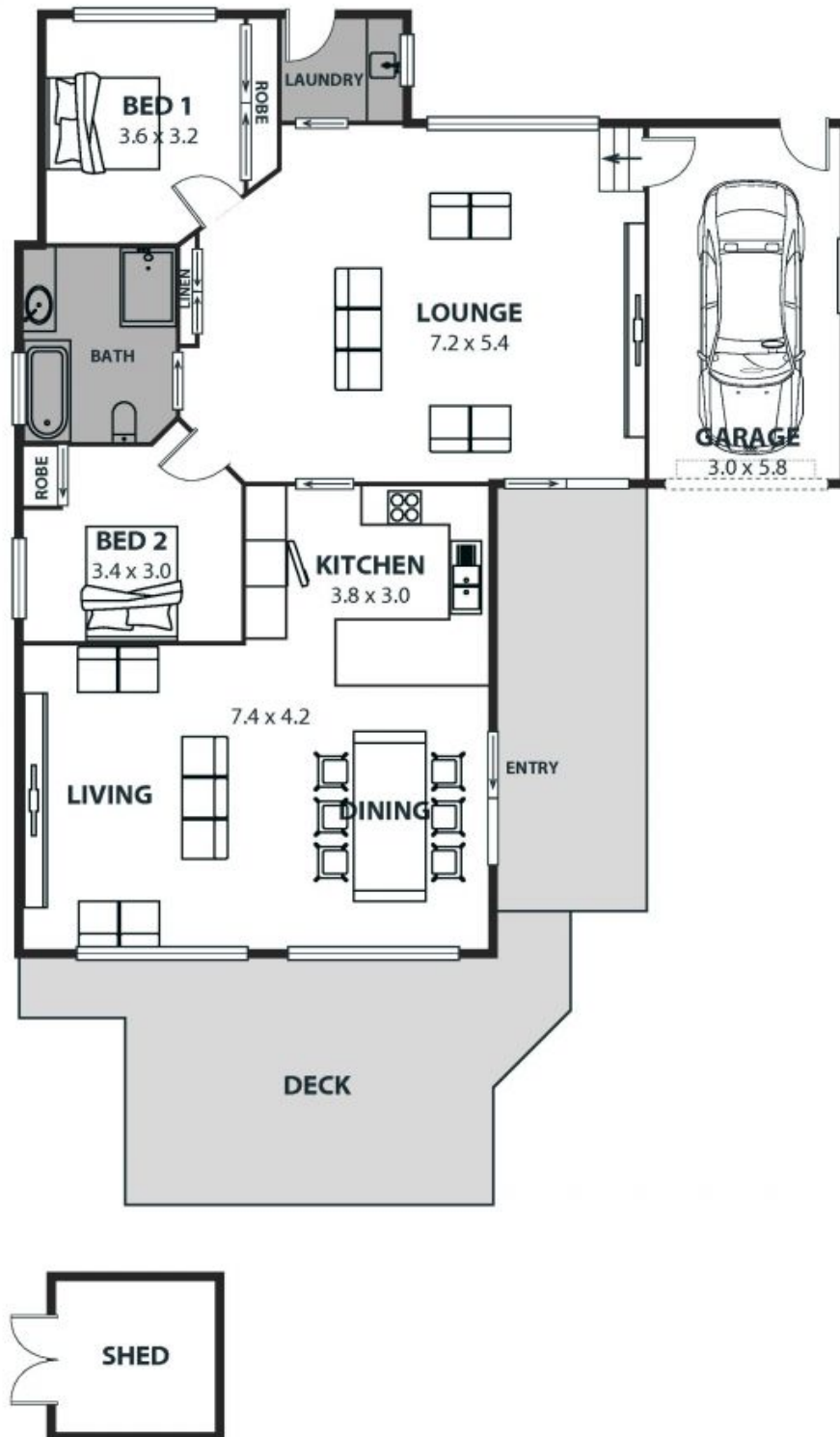
...

Offering a beautifully flowing floor plan, superb outdoor entertaining, and a private setting, this light-filled

**Adam McMahon**

**Sophie Hogan**

02 4267 5377



# 10A Gifford Street, Coledale

Internal Space 109m<sup>2</sup>



Plans shown are for presentation purposes only and are not part of any legal document or title and are subject to errors, omissions, inaccuracies and should not be used as sole and accurate reference. Particulars given are for general information only and do not constitute any representation on the part of the vendor or agent. No liability will be accepted.