



13 Whiting Crescent Corrimal, NSW

 5

 3

 2

The PERFECT home for families seeking SPACE!

Superbly situated in a quiet pocket of Corrimal, this five-bedroom, three-bathroom home set on a whopping 1324 sqm (approx.) promises the ultimate in spacious family living. Multiple living areas are complemented by a superb covered entertaining patio and huge back garden, while mountain views set the scene for a peaceful family lifestyle just moments from the beach and town centre.

Price:

\$1,785,000

LOCATION

With every convenience an easy walk from home and stunning beaches only moments away, this is a superb location for buyers seeking easy family living.

...

...

PROPERTY...

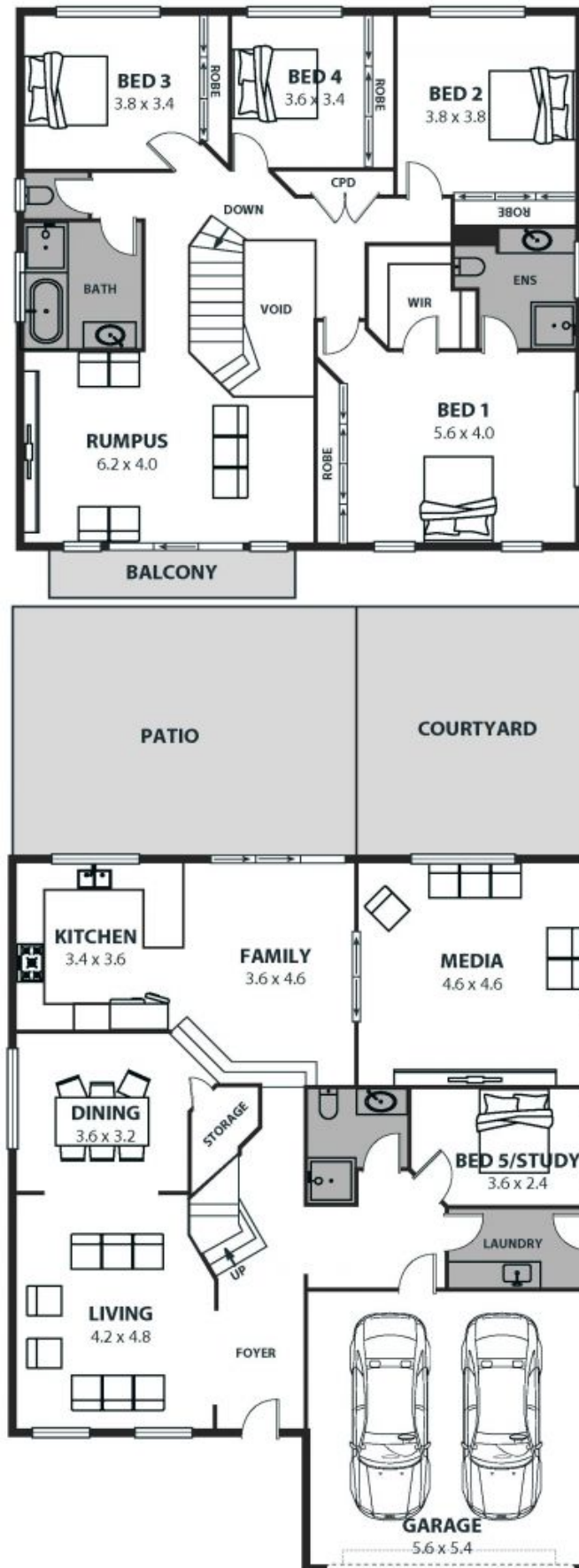
...

Boasting rarely-found proportions, this sprawling property presents an unmissable opportunity for families wanting plenty of room to move. 1324 sqm (approx.) of enviably positioned land accommodates the

Ethan Hennessy

Shawn Condello

02 4267 5377



13 Whiting Crescent, Corrimal

Internal Space 293m²



Plans shown are for presentation purposes and are not part of any legal document or title and are subject to errors, omissions, inaccuracies and should not be used as sole and accurate reference. Particulars given are for general information only and do not constitute any representation on the part of the vendor or agent. No liability will be accepted.