



46 Robinsville Crescent Thirroul, NSW



## Peaceful, private, and perfectly positioned for the good life!

Tucked away from the street on an enviably large allotment just moments from Thirroul Beach, this dream coastal retreat offers peaceful family living and an easy commute to Sydney.

**Price:** Price Guide \$1,690,000 - \$1,740,000  
**Council Rates:** \$600.75 p/q

### LOCATION

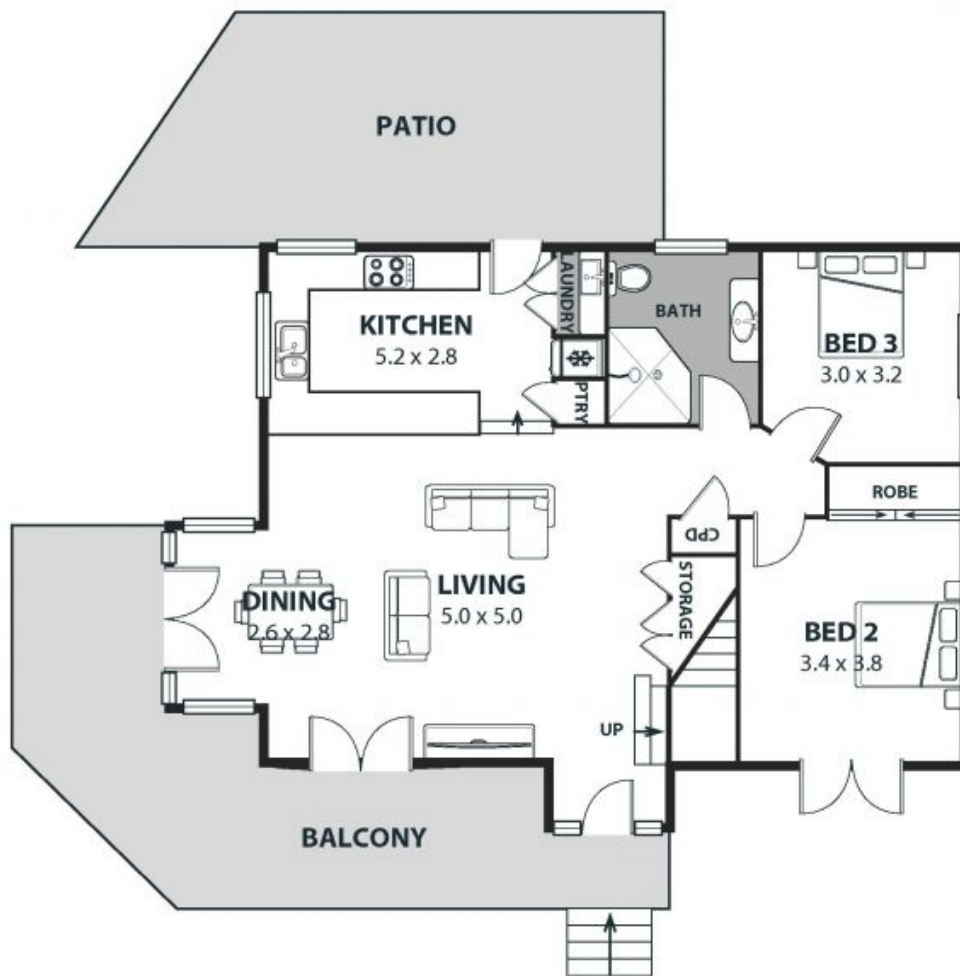
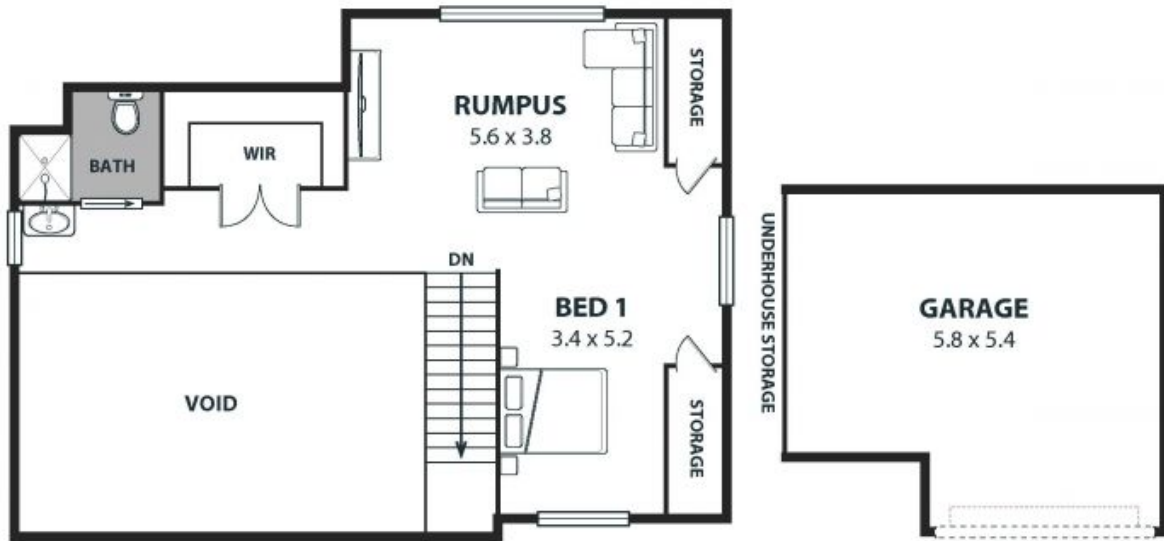
Situated in a peaceful, leafy setting moments from a choice of stunning beaches and oh-so-close to Thirroul's vibrant village, this location will strike a chord with anyone craving peace and tranquility without compromising on convenience.

Families can look forward to a quiet street where the kids can play with their neighbourhood friends and a short drive to Thirroul Public School and Bulli High School, while city workers will have an easy commute. Drive to Sydney in 70 minutes (approx.) and to Wollongong

**Adam McMahon**

**Sophie Hogan**

02 4267 5377



## 46 Robinsville Crescent, Thirroul

Internal Space 141m<sup>2</sup>



Plans shown are for presentation purposes and are not part of any legal document or title and are subject to errors, omissions, inaccuracies and should not be used as sole and accurate reference. Particulars given are for general information only and do not constitute any representation on the part of the vendor or agent. No liability will be accepted.