



12 Timberi Avenue Dapto, NSW



3



2



1

Modern family living on a HUGE allotment!

Set on a whopping 867 sqm (approx.), this welcoming three-bedroom, two-bathroom home offers a light-filled family retreat close to Dapto's CBD and within enviably easy reach of Lake Illawarra and a selection of stunning beaches.

Location

Ideally located in a family-friendly pocket of Dapto less than 20 minutes (approx.) from the heart of Wollongong's bustling CBD, this home offers a peaceful lifestyle without compromising on big-city convenience.

The Timberi Park Playground is just metres from the front door, sure to delight the kids, while walking distance proximity to Mount Brown Public School and the three-minute drive (approx.) to Dapto High School add extra family appeal.

...

...

Property...

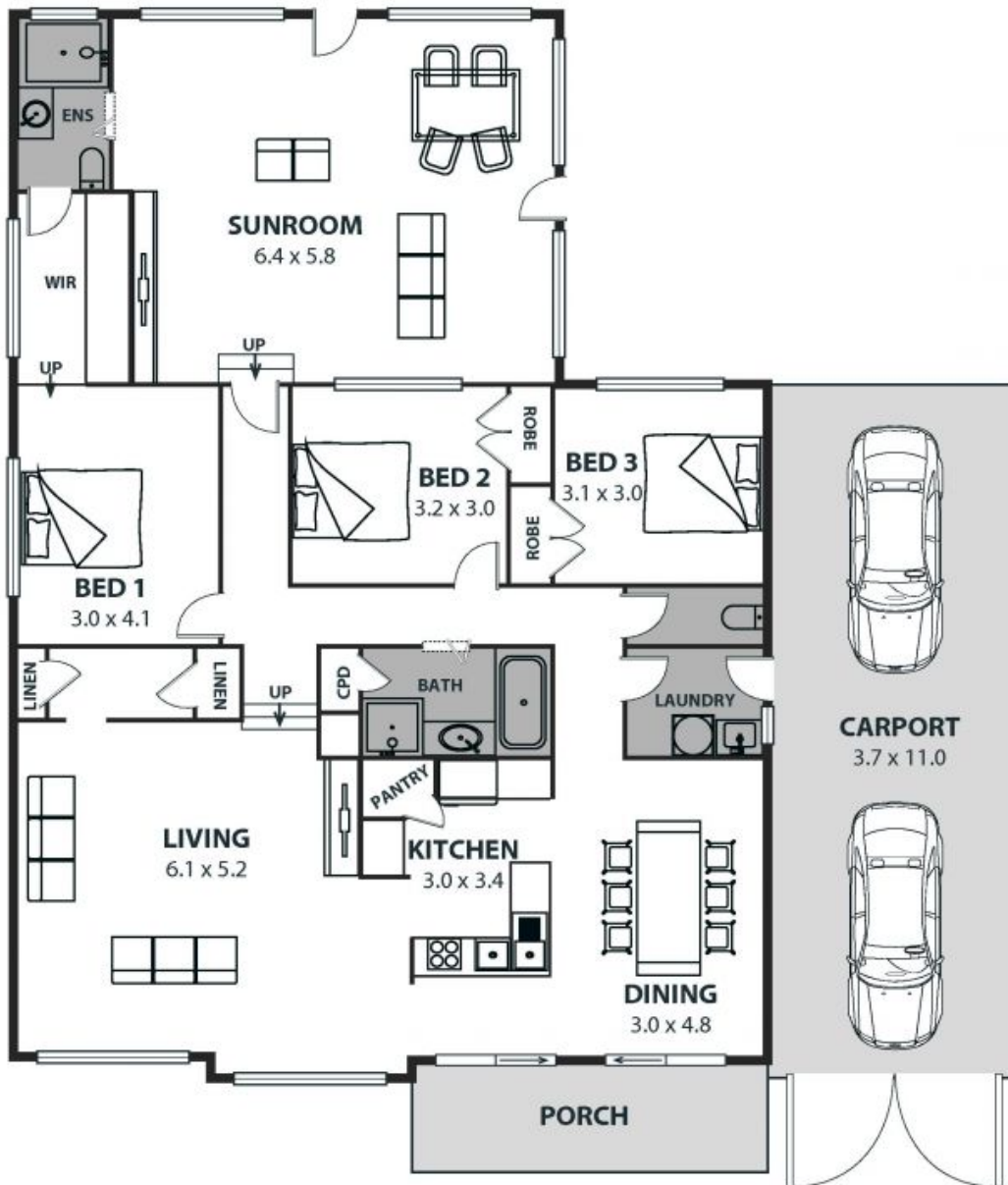
...

Offering a rare amount of outdoor space and a spacious, free-flowing floor plan, this inviting family home will delight buyers seeking comfort, lifestyle, and plenty of room to move! Move in and enjoy the home as is, or take advantage of the scope for further

updates and th

Price: \$770,000
Council Rates: \$572.20 p/q

Adam McMahon



12 Timberi Avenue, Dapto

Internal Space 174m²



Plans shown are for presentation purposes and are not part of any legal document or offer and are subject to errors, omissions, inaccuracies and should not be used as sole and accurate reference. Particulars given are for general information only and do not constitute any representation on the part of the vendor or agent. No liability will be accepted.