



4 Narelle Crescent Woonona, NSW



3



1



2

## LIGHT FILLED THREE BEDROOM HOME IN IDEAL LOCATION

Promising a wonderful family lifestyle in a fantastic setting nearby to Hollymount Park. This light filled home offers relaxed living in a quiet pocket of popular Woonona

**Price:** \$780 pw

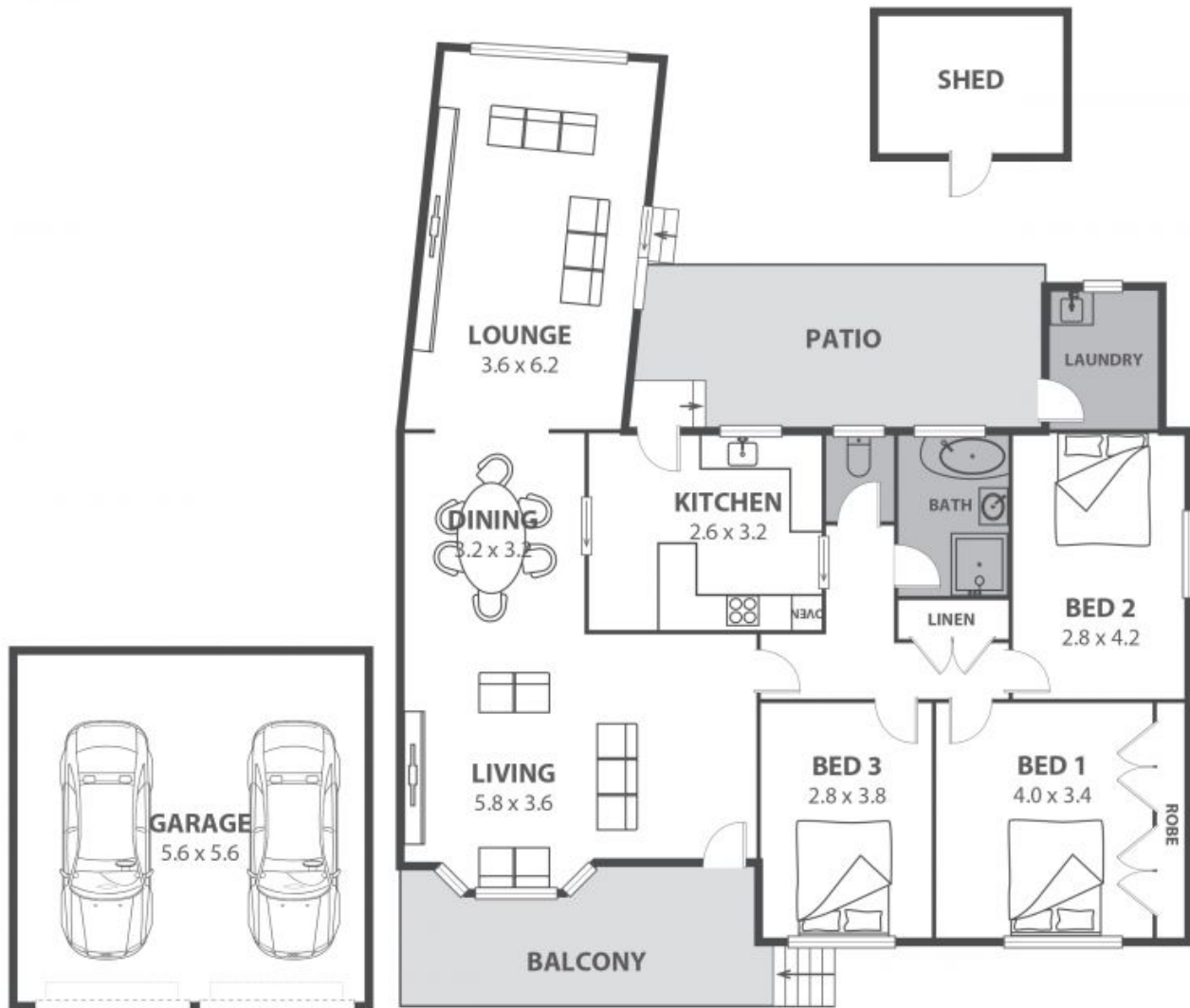
**Available Date:** 2024-02-22

### Features include:

- Three good sized bedrooms, the master with built-in-robe
- Spacious living and dining area
- Stylishly renovated bathroom with separate bath and toilet
- Well appointed kitchen overlooking yard with breakfast bar
- Brand new carpet throughout.
- Spacious secured yard and lock up garage
- The thriving township of Woonona is a 3-minute drive up the road and is where you'll find trendy cafes, restaurants, supermarkets and services
- Public transport options include bus links and Train Station nearby

**Dignam Real Estate**

**Property Management**



## 4 Narelle Crescent, Woonona

Internal Space 155m<sup>2</sup>



Plans shown are for presentation purposes and are not part of any legal document at this time and are subject to errors, omissions, inaccuracies and should not be used as sole and accurate reference. Particulars given are for general information only and do not constitute any representation on the part of the vendor or agent. No liability will be accepted.