



11A Carlie Place Woonona, NSW



4



2



2

## Parkside family living at its finest!

With Hollymount Park right next door and every convenience nearby, this instantly appealing four-bedroom, two-bathroom family home offers superb alfresco entertaining, a huge back garden, and a spectacular park outlook to take your breath away.

### Location

With sweeping park views setting the perfect backdrop for peaceful family living, this quiet cul de sac address offers one of Woonona's most picturesque settings and a private position away from street view.

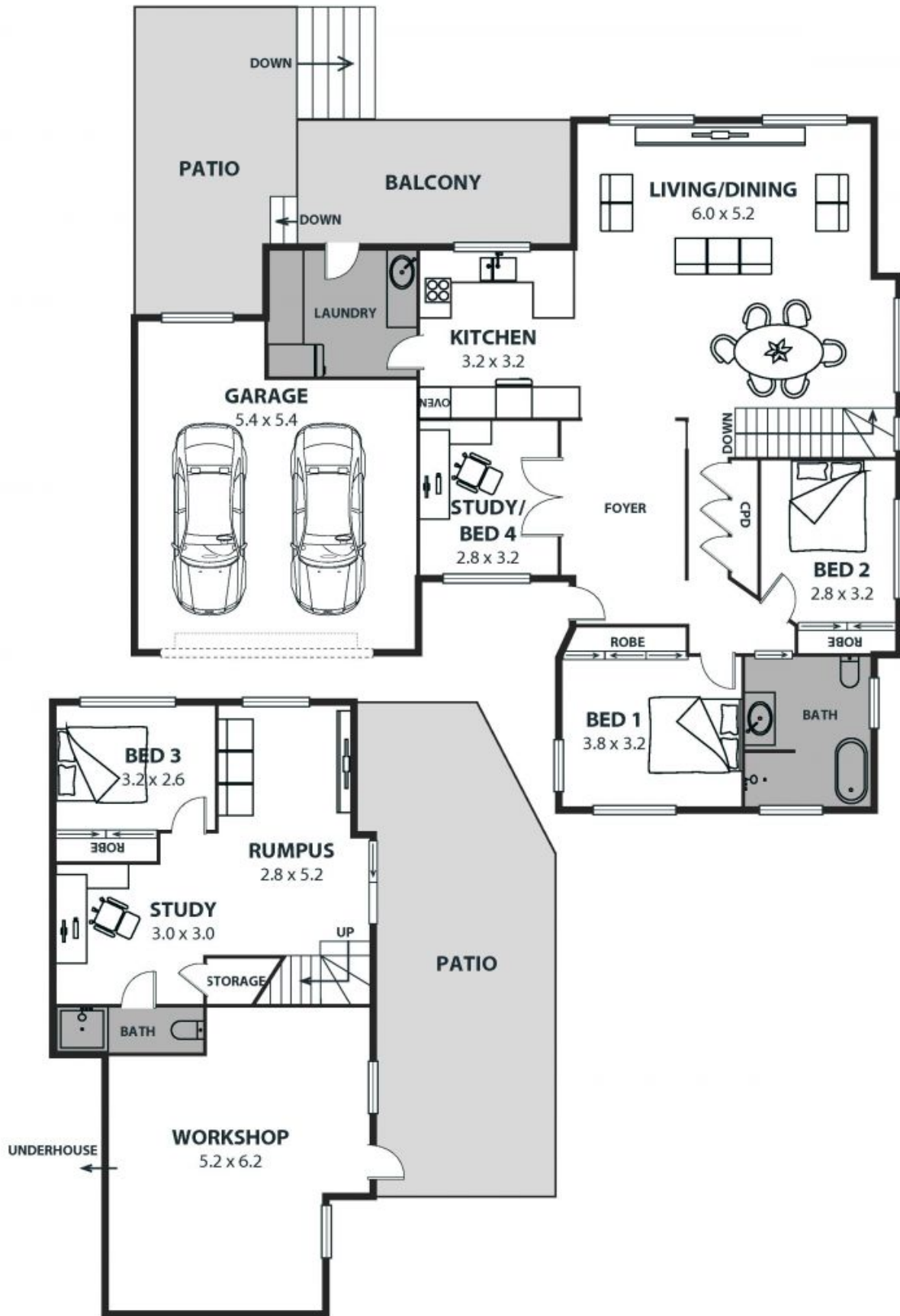
Enjoy direct access to Hollymount Park just footsteps from your front door, with wide open spaces and a playground sure to delight the kids.

Russell Vale Golf Club awaits keen golfers an easy walk from home, while the stunning beaches of Woonona and Bulli are both just five minutes (approx.) away promising a dream coastal lifestyle the whole

**Price:**

Contact Agent

**Adam McMahon**



# 11A Carlie Place, Woonona

Internal Space 219m<sup>2</sup>



Plans shown are for presentation purposes and are not part of any legal document or title and are subject to error, omissions, inaccuracies and should not be used as sole and accurate reference. Particulars given are for general information only and do not constitute any representation on the part of the vendor or agent. No liability will be accepted.