



24/10 Derwent Avenue Avondale, NSW

 3

 2

 2

Surprisingly spacious, luxuriously comfortable

Nestled within a meticulously maintained residential complex just moments from Dapto, this free-standing three-bedroom, two-bathroom villa offers surprisingly spacious interiors complemented by a generous back garden.

LOCATION

Ideally located for easy family living, this beautifully presented home is privately positioned on the fringe of a welcoming complex of villas just moments from every convenience.

Drive to Dapto's town centre in just five minutes (approx.) to hit the shops, do the groceries or grab a bite to eat, or head over to Stockland Shellharbour for big-name shopping less than 15 minutes from home (approx.).

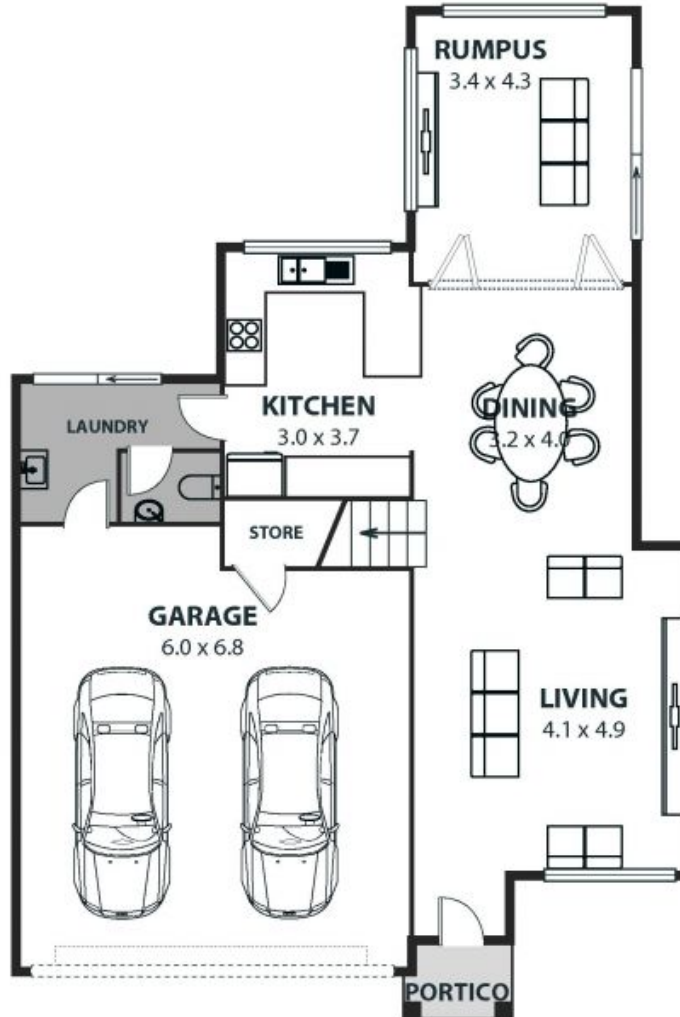
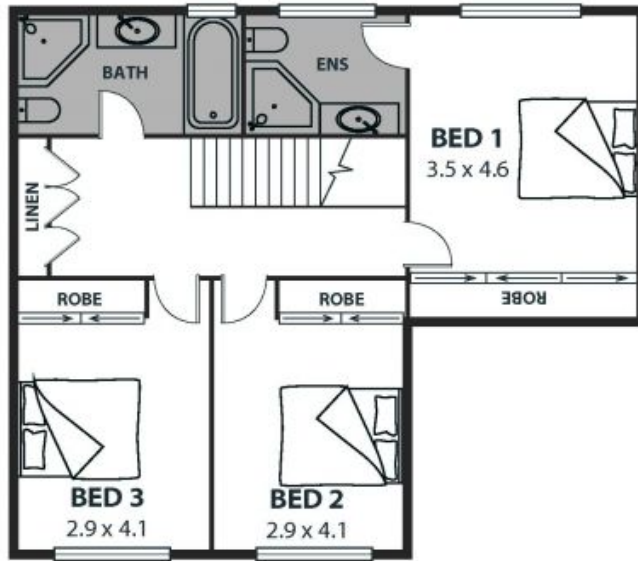
Drive to Wollongong in less than 20 minutes (approx.) or catch the train from nearby Dapto Station for easy rail

Price: \$787,500
Council Rates: \$380.00 p/q
Water Rates: \$180.00 p/q
Strata Rates: \$747.00 p/q

Ethan Hennessy

Shawn Condello

02 4267 5377



24/10 Derwent Avenue, Avondale

Internal Space 159m²



Plans shown are for presentation purposes and are not part of any legal document or offer and are subject to error, omissions, inaccuracies and should not be used as sole and accurate reference. Particulars given are for general information only and do not constitute any representation on the part of the vendor or agent. No liability will be accepted.