



801/27 Atchison Street Wollongong, NSW



2



1



1

## Mountain views and city lights

This spacious, well-presented apartment is set to delight buyers seeking to live or invest in a prime inner-city location just footsteps from every convenience.

### LOCATION

A dynamic inner-city lifestyle is all yours at this superb address, with the conveniences and attractions of the CBD on your doorstep and parks and beaches only moments away.

Walk to Wollongong Central in seven minutes (approx.) and stroll to your choice of bars, restaurants, and cafes in moments.

buzz.

The five-minute walk (approx.) to Wollongong Station adds extra convenience, promising a stress-free commute to Sydney.

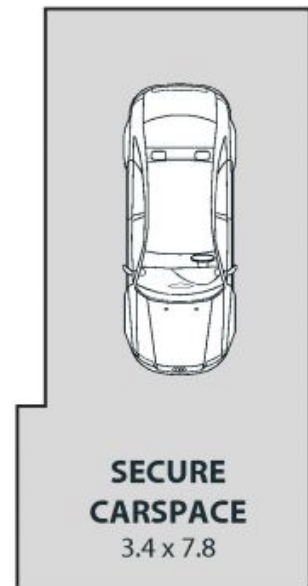
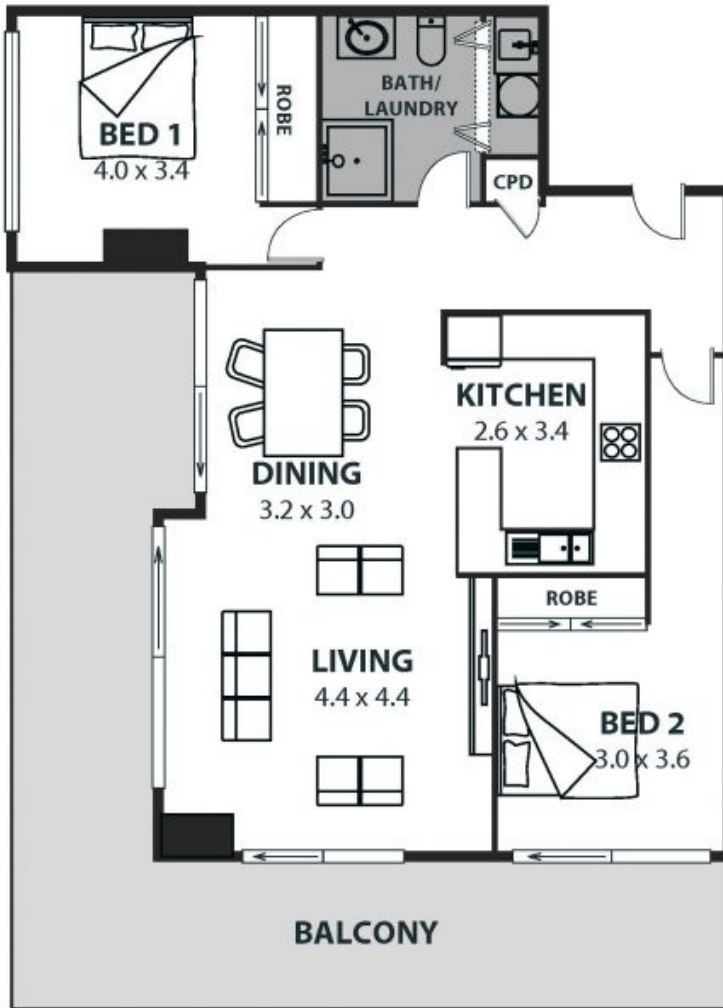
**Price:** \$685,300

**Strata Rates:** \$1,337.00 p/q

**Ethan Hennessy**

**Max Fairnie**

02 4267 5377



801/27 Atchison Street, Wollongong

Internal Space 82m<sup>2</sup>



Plans shown are for presentation purposes and are not part of any legal document or title and are subject to error, omissions, inaccuracies and should not be used as sole and accurate reference. Particulars given are for general information only and do not constitute any representation on the part of the vendor or agent. No liability will be accepted.