



6 Knight Place Bulli, NSW



3



2



2

Spacious family living with exciting scope for the future

Set on a stunning 561 sqm (approx.) corner allotment in a peaceful Bulli location, this three-bedroom home offers easy family living and plenty of room to move. With scope for updates and plenty of space to extend (STCA) to suit your family's needs, this is an outstanding opportunity to secure a home that's ready to welcome you now, and sure to shine in the future.

Location

Nestled at the leafy base of the escarpment, this peaceful address offers a tranquil family lifestyle moments from every convenience.

Families will appreciate the proximity to sought-after schools, with Bulli Public School, Bulli High School, and St. Joseph's Catholic Parish Primary School all only five minutes away (approx.), while city workers can look forward to an easy 16-minute (approx.) drive to Wollongong and a 75-minute (approx.) trip to Sydney. Alternatively, drive to nearby Bulli Station in four minute

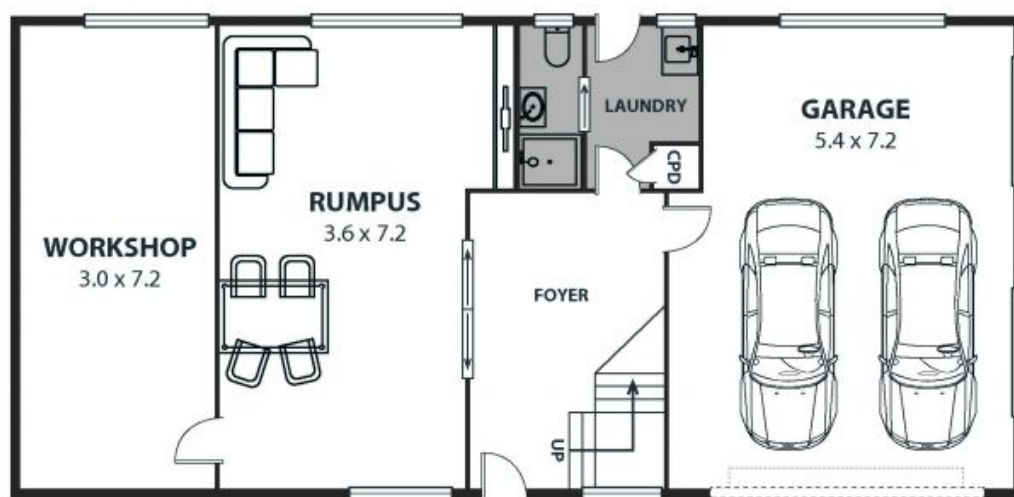
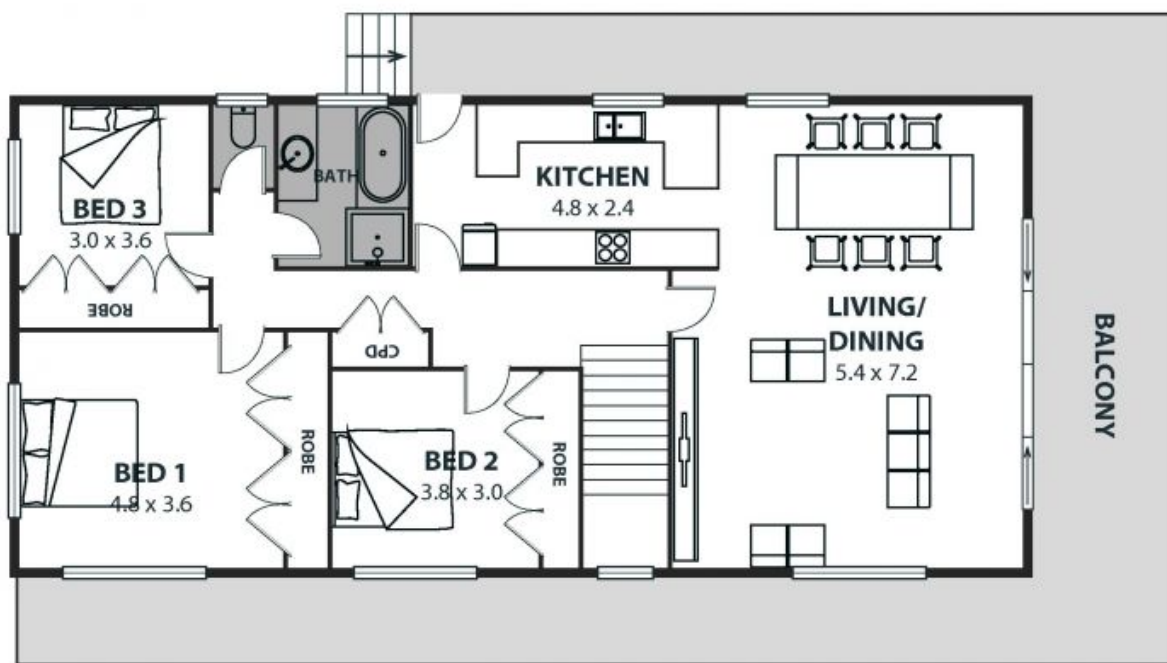
Inspect:

Price: Price Guide \$1,240,000 - \$1,320,000
Council Rates: \$507.63 p/q

Adam McMahon

Ange Carrigan

02 4267 5377



6 Knight Place, Bulli

Internal Space 224m²



Plans shown are for presentation purposes and are not part of any legal document or title and are subject to errors, omissions, inaccuracies and should not be used as sole and accurate reference. Particulars given are for general information only and do not constitute any representation on the part of the vendor or agent. No liability will be accepted.