

13/12 Waterloo Street Bulli, NSW



## EASTSIDE - THREE BEDROOM TOWNHOUSE

This three bedroom townhouse is nestled in a private and quiet complex on the east side of the highway. The property has its own private backyard with timber deck, raised vegetable garden and a shed. Residents can also access and use the private, 700sqm grassy reserve as part of the complex's common property. This property is also energy efficient, fitted with 4.5kW of solar on the roof. It is a close walk to the local public and high schools. Bulli train station and Bulli village are within walking distance, as are parks, cycleways and local restaurants. Pets will be considered.

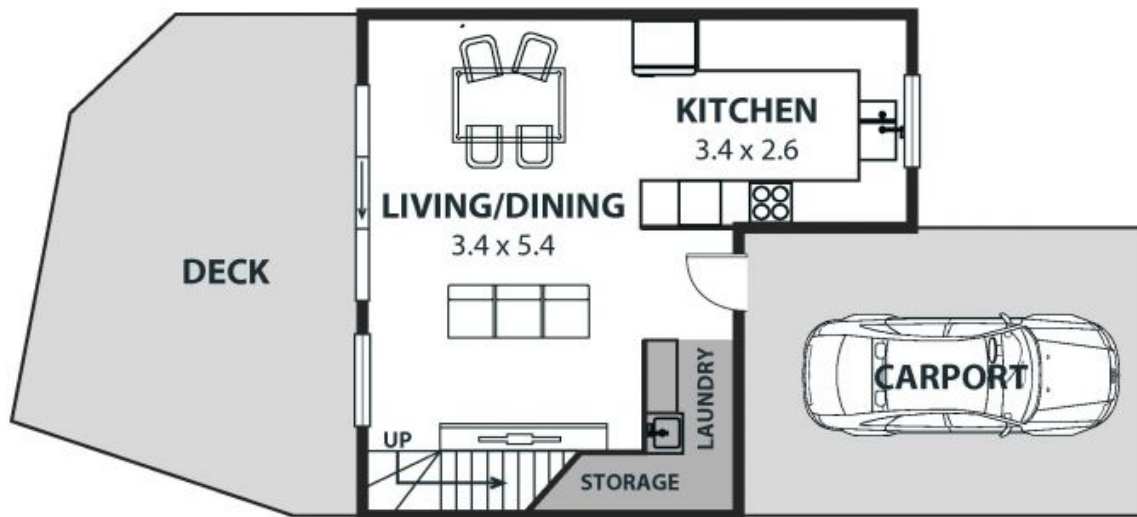
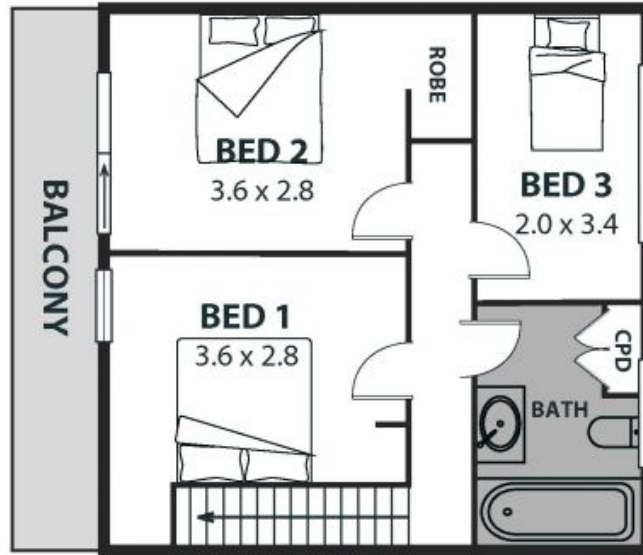
**Price:** \$700 pw  
**Available Date:** 2024-07-29

What you will love :

- Three bedrooms, two with built-in-robos.
- Combined light-filled living & dining area.
- 4.5kW of solar panels.
- Fibre to the premise NBN.
- Spacious well appointed kitchen with gas stoves.
- Ceiling fans throughout.
- Private yard with timber deck and raised vegetable garden.
- Garden shed.

**Dignam Real Estate**

**Property Management**



13/12 Waterloo Street, Bulli

Internal Space 75m<sup>2</sup>



Plans shown are for presentation purposes and are not part of any legal document or offer and are subject to errors, omissions, inaccuracies and should not be used as sole and accurate reference. Particulars given are for general information only and do not constitute any representation on the part of the vendor or agent. No liability will be accepted.