



3/40 Cherry Street Woonona, NSW



2



1



1

Stylish Tri-Level Retreat in Woonona's Premier Pocket

Nestled in the quiet serenity of the coveted Edgewood Estate, this immaculately presented tri-level residence delivers an exceptional blend of privacy, style, and convenience. Boasting neutral interiors and quality finishes throughout, this two-bedroom townhouse offers a wonderful opportunity for investors, downsizers, or first-home buyers seeking low-maintenance living in a well-maintained complex with a welcoming community feel.

PROPERTY HIGHLIGHTS:

- Community-Oriented Complex: Well-maintained and designed with a sense of connection and privacy.
- Elegant Living Spaces: Open-plan lounge and dining area adorned with durable timber laminate floors for effortless style and easy care.

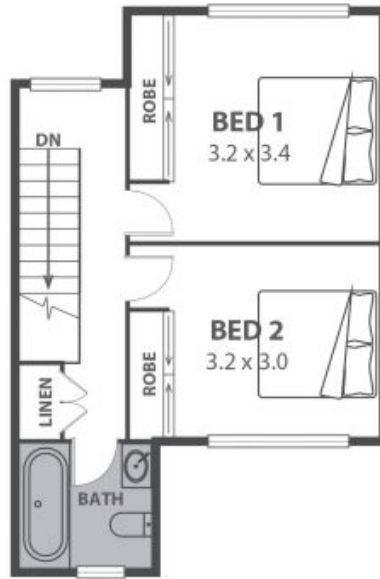
- Contemporary Kitchen:

Price: \$840,000
Council Rates: \$414.62 p/q
Strata Rates: \$945.54 p/q

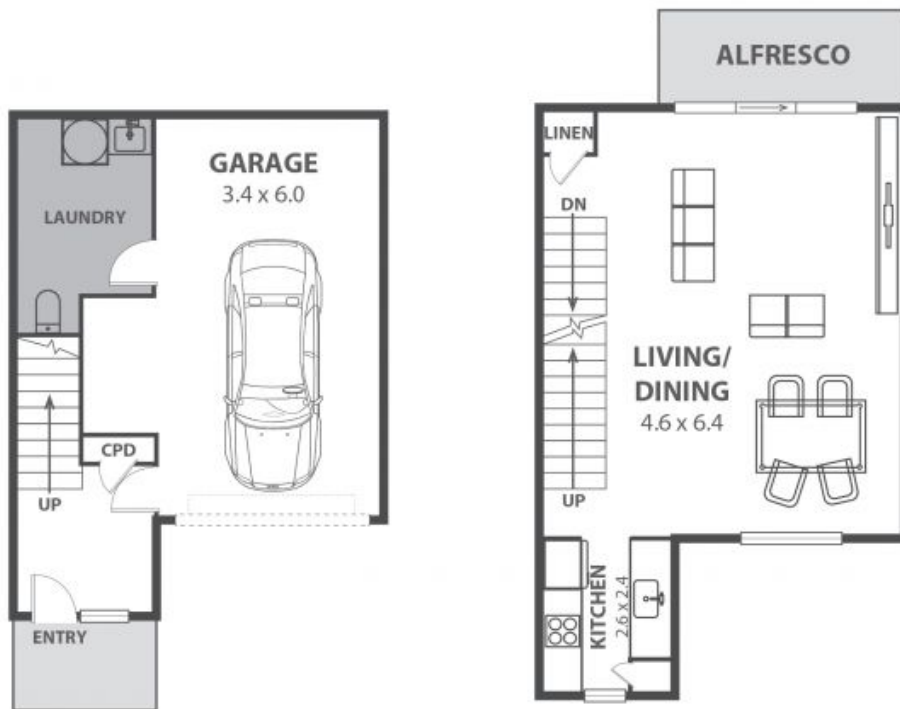
Ethan Hennessy

Shawn Condello

02 4267 5377



SECOND LEVEL



GROUND LEVEL

FIRST LEVEL

3/40 Cherry Street, Woonona

Internal Space 120m²



Plans shown are for presentation purposes and are not part of any legal document as they are subject to errors, omissions, inaccuracies and should not be used as sole and accurate reference. Particulars given are for general information only and do not constitute any representation on the part of the vendor or agent. No liability will be accepted.