



20 Domville Road Otford, NSW



4



3



2

## A Remarkable Fusion of Architecture and Wilderness

Perfectly positioned in one of Otford's most peaceful and tightly held pockets, this bespoke eco-design residence (built in 2015) is a remarkable celebration of creativity, craftsmanship and connection to nature. Warm, playful and artistically executed, the home unfolds across multiple levels to frame uninterrupted views of the surrounding rainforest - a private sanctuary where architecture and landscape exist in perfect harmony.

? A masterfully crafted modern eco-design maximises natural light, cross-ventilation and rainforest vistas, creating a calm, sensory living environment deeply attuned to its surroundings.

? Expansive open-plan living and dining pavilion framed by full-height recycled Blackbutt sliders that dissolve onto a vast covered balcony - a true outdoor living room floating among the palms.

? A slow, meditative atmosphere defined by birdsong, filtered forest breezes and ever-changing light that dances

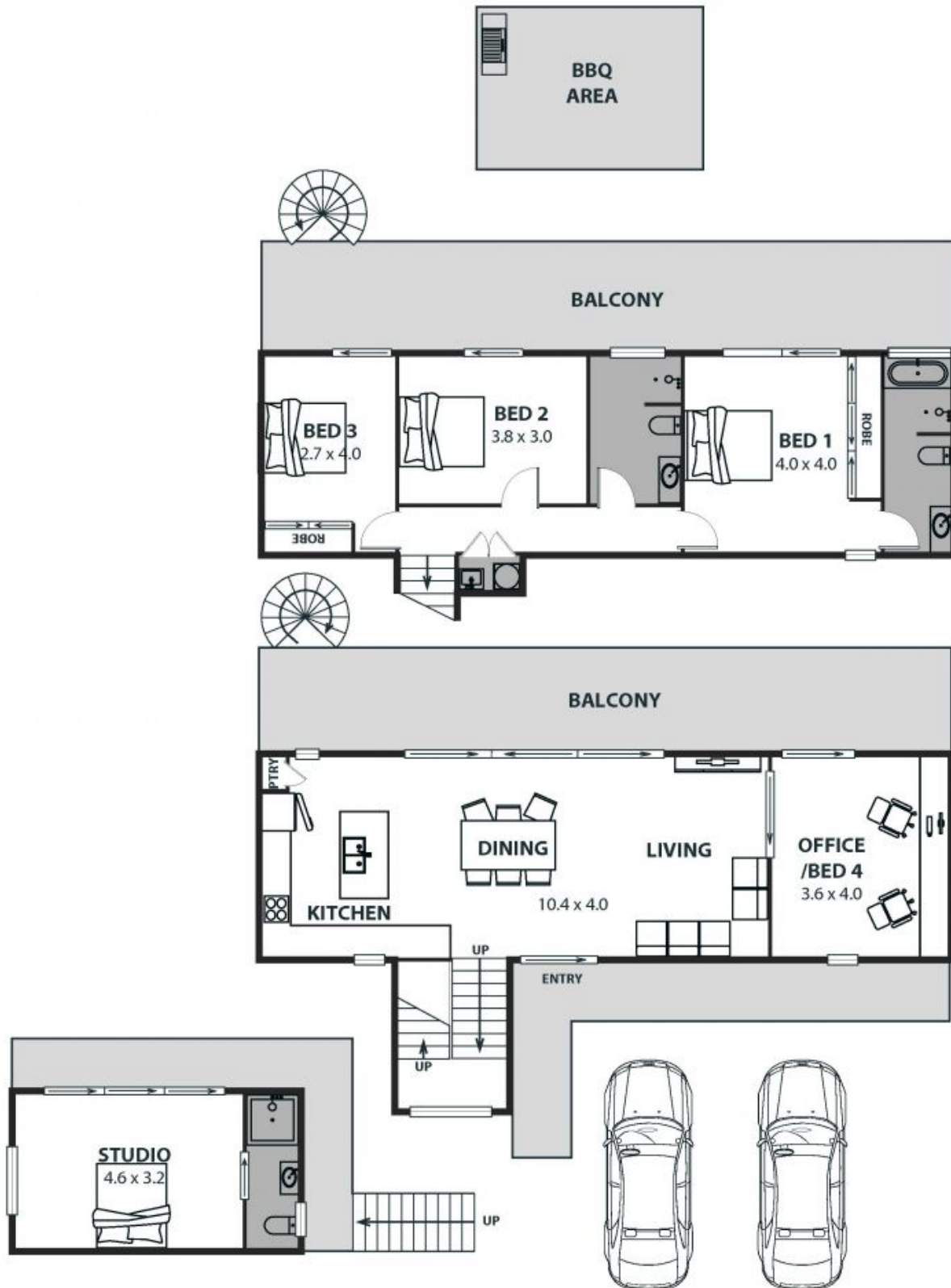
**Price:** \$1,955,000.00

**Council Rates:** \$625.00 p/q

**Adam McMahon**

**Ethan Hennessy**

02 4267 5377



20 Domville Road, Otford

Internal Space 140m<sup>2</sup>



Plans shown are for presentation purposes and are not part of any legal document or offer and are subject to errors, omissions, inaccuracies and should not be used as sole and accurate reference. Particulars given are for general information only and do not constitute any representation on the part of the vendor or agent. No liability will be accepted.